
SB-650

Software Manual

Version 4.03



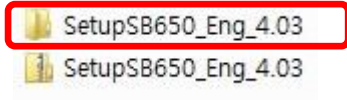
Contents

1. INSTALLATION	3
1) SOFTWARE INSTALLATION.....	3
2) USB PORT DRIVER INSTALLATION	4
2. RUN SB-650 SOFTWARE.....	5
3. SB-650 SOFTWARE SCREEN DESCRIPTION	6
4. DEVICE UPDATE	8
5. BELL SETTING.....	10
1) IMPORTING BELL DATA	111
2) EXPORTING BELL DATA.....	12
3) EDIT BELL DATA.....	13
6. SETTING.....	17
7. MANAGE SPECIAL IMAGE & 3 BUTTON BELL SPECIAL IMAGE	18
1) CREATE IMAGE USING 'PAINT'	19
2) CREATE IMAGE USING IMAGE EDITOR [RECOMMENDED]-IMAGE.....	21
3) CREATE IMAGE USING IMAGE EDITOR [RECOMMENDED]-3 BUTTON IMAGE.....	22
4) SENDING SPECIAL IMAGE & 3 BUTTON BELL IMAGE TO YOUR DEVICE.....	23
8. EXIT	24

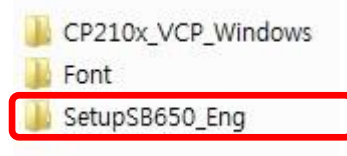
1. Installation

1) Software Installation

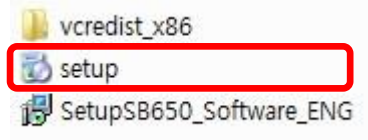
- ① Unzip the file "SetupSB650_Eng_4.03"



- ② Go to "SetupSB650_Eng" to install SB-650 programming software

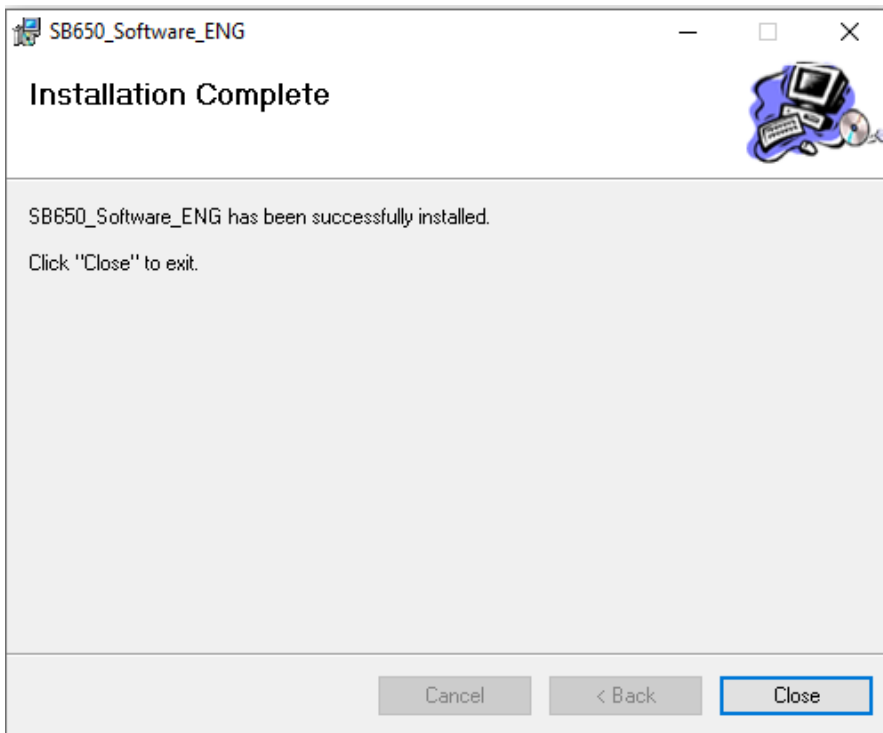


- ③ Double click "setup" to run



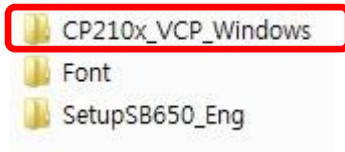
IMPORTANT: You should run "setup.exe" to install software. Also ensure to have internet while installing.

- ④ The following image will appear when you complete installation.

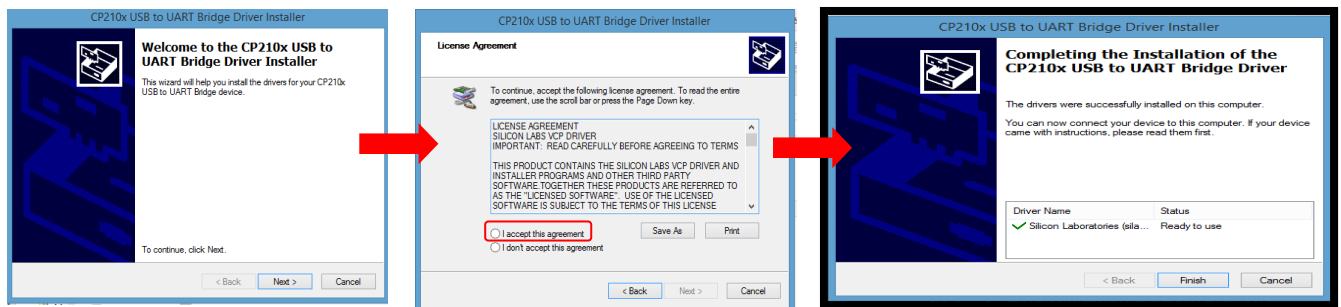
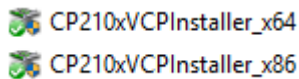


2) USB Port Driver Installation

- ① Go back to unzipped "SetupSB650_Eng_4.03" folder and double click "CP210x_VCP_Windows"



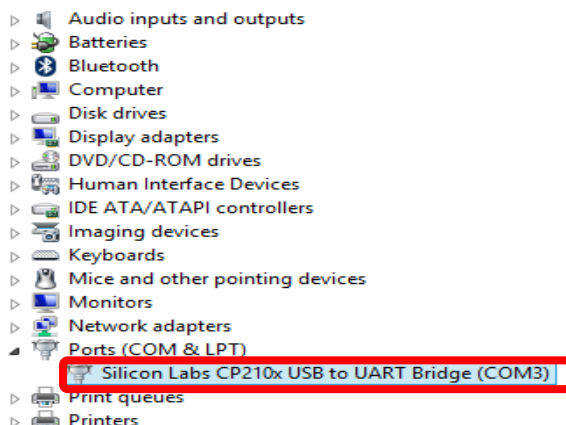
- ② Check your window system type and run the applicable one for your window.
- System Type 32bit: "CP210xVCPInstaller_x86.exe"
 - System Type 64bit: "CP210xVCPInstaller_x64.exe"



- ③ Connect SB-650 to your PC and go to device manager and check whether the USB driver is installed properly.

How to check?

- i. Go to start
- ii. Search for "device manager"
- iii. Go to 'device manager' and see if you have the following appears in your device manager folder.



2. Run SB-650 Software

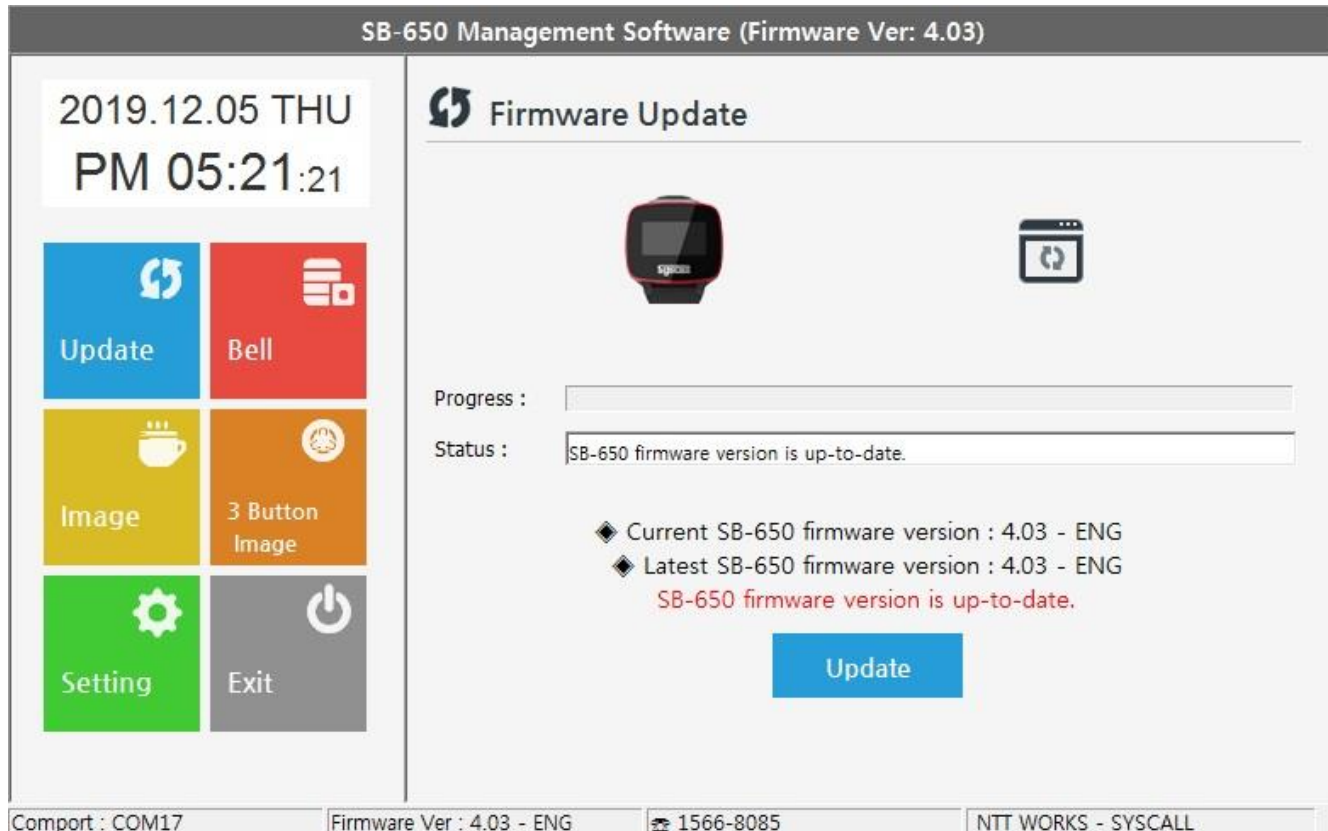
- ① SB-650 software shortcut has created on your desktop. Double click and run it.



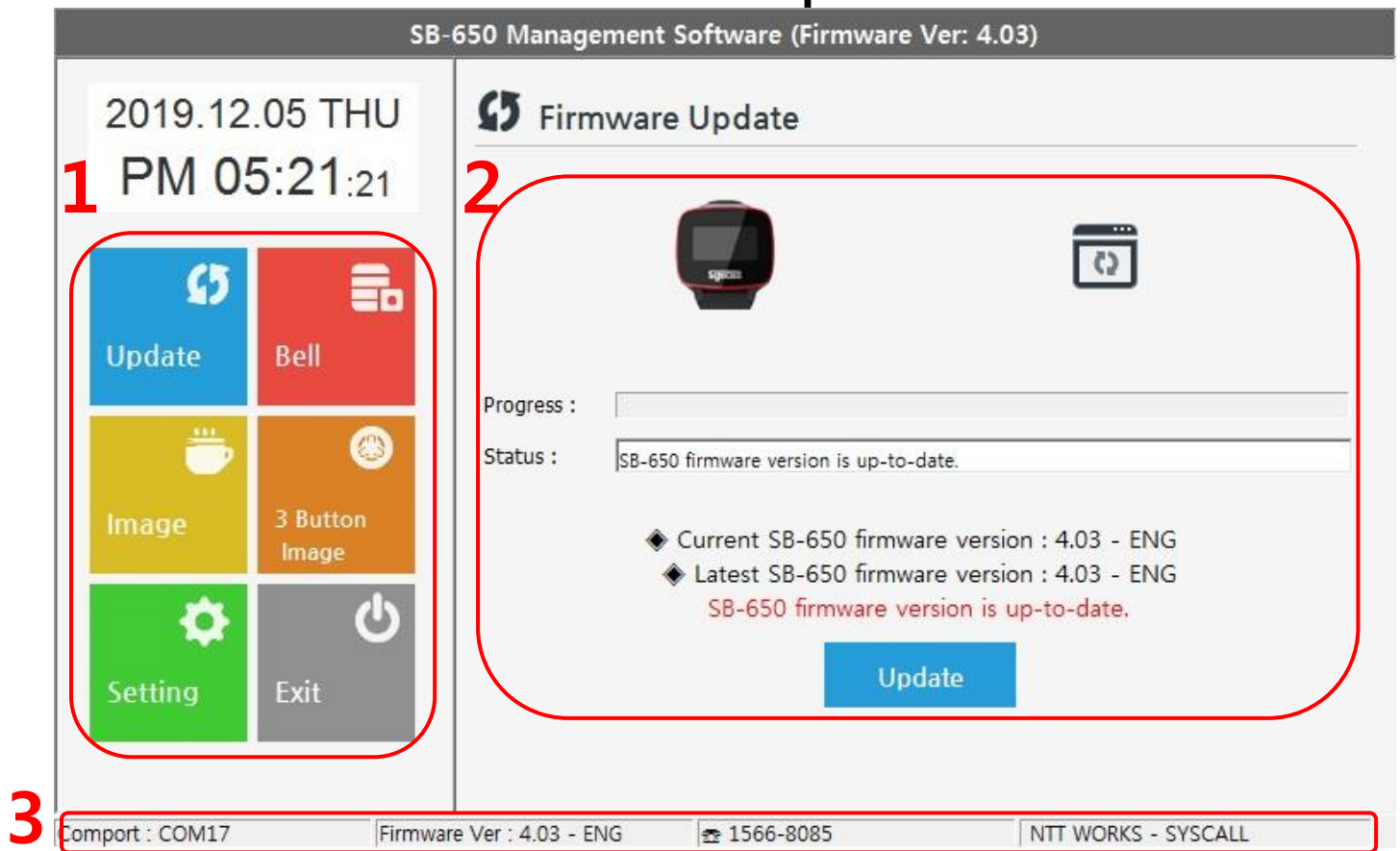
- ② Select your COM port and click "Connect" to enter.



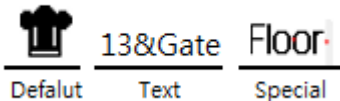
- Home screenshot -



3. SB-650 Software Screen Description



① Menu: Click the desired menu and its related information will display in ②.

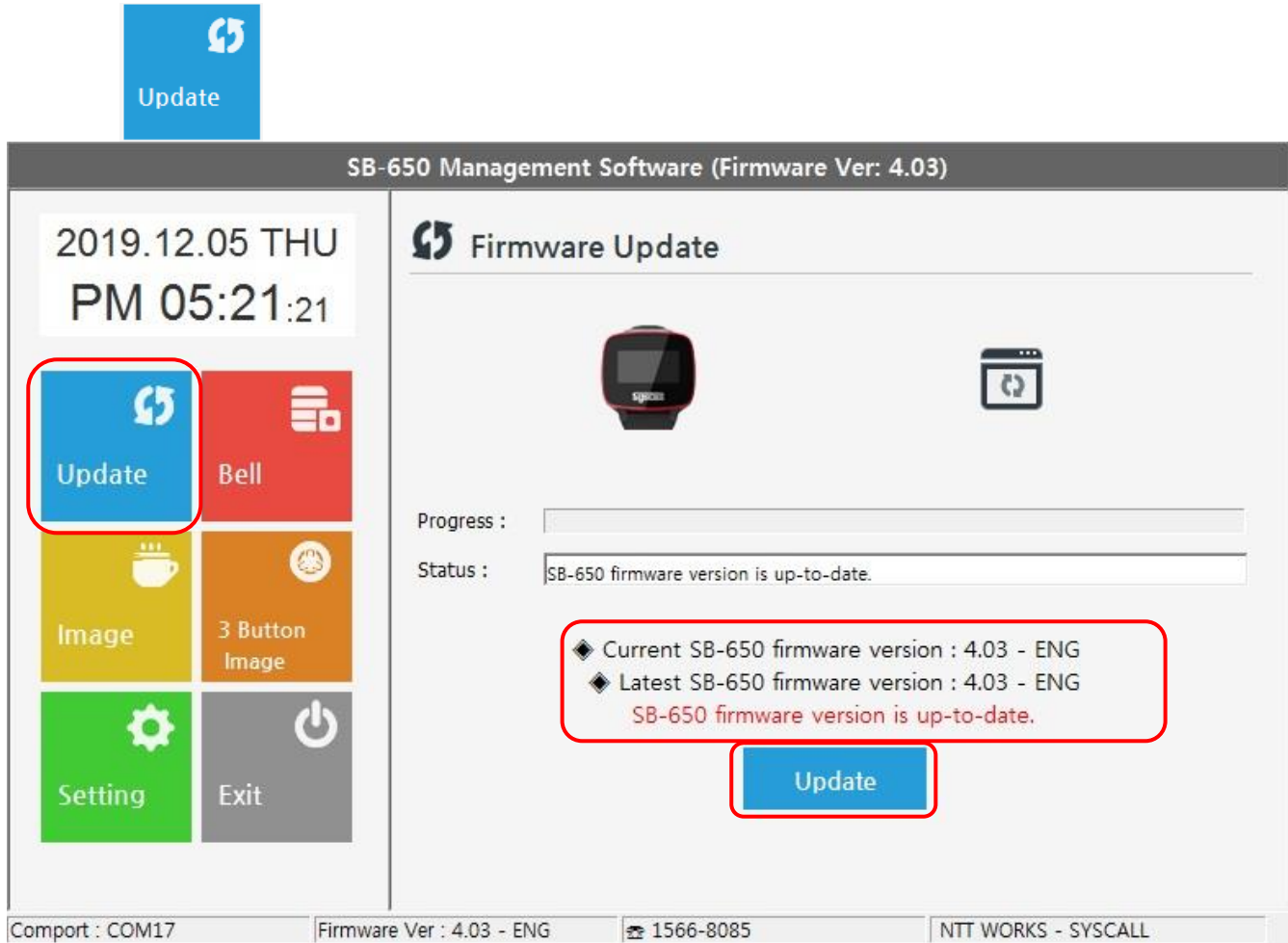
Menu	Key feature	Description
Update	SB-650 Firmware Update	You can update your device firmware here
Bell	Manage Bell Data (Caller ID)	<p>You can change bell data (caller ID) for pre-registered bells using numbers, alphabets, and special characters in text column, and default images in default column, and customizable images in special column.</p> <p>[Caller ID example]</p> <div style="text-align: center;">  </div> <p>Default – There are 18 images provided by manufactures and you cannot edit the images.</p> <p>Text - You can create the text up to 10 characters using a number, alphabet, and special character.</p> <p>Special – You can create your own image and store it up to 20 images. You can also change the default images here but you can only place it where the special image displays in caller ID.</p>
Image	Customize Image	You can customize / create special images here

3 Button Image	Customize-3button bell image	You can customize / create 3 button special images here.
Setting	SB-650 Setting	You can change your device function setting here – sound, display type, group number, etc.
Exit	Exit	Exit from the software

- ② Operating area for each menu. Device update is the default home screen.
- ③ Software status bar: It displays COM Port info, Firmware version, NTTWORKS contact number, and the name of developer from the left.

4. Device Update

- ① Go to Device Update

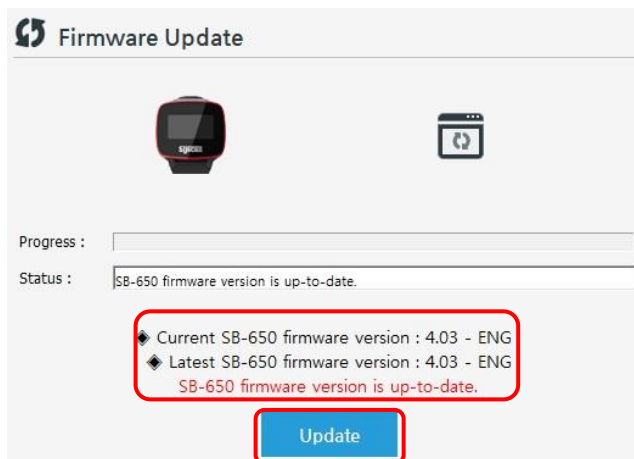


- ② You are able to check your device firmware version in Update.

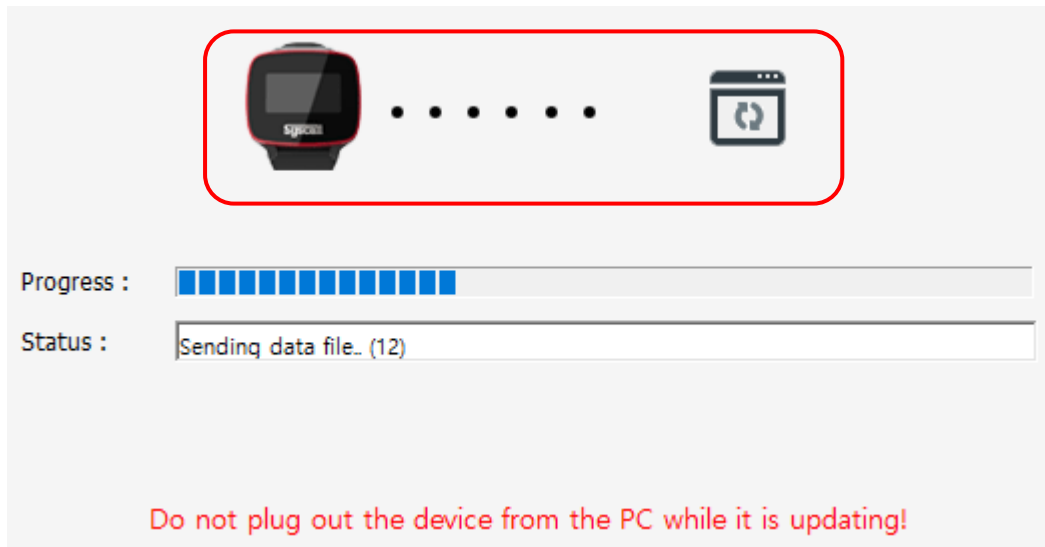
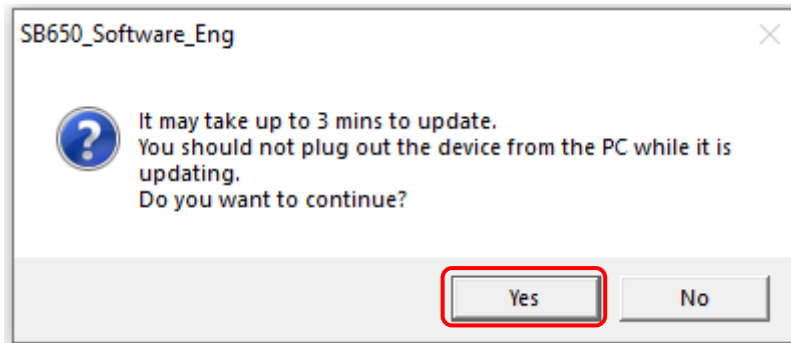
Connect your device to PC and it will bring your device current firmware version as well as the available update. Keep your device version up to date.

How to Update?

1. Click update icon. It will take approx. 3 minutes.



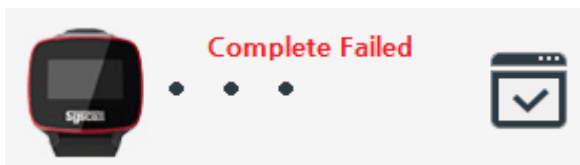
2. Click "Yes" to start updating your device.



- Firmware updating screenshot-



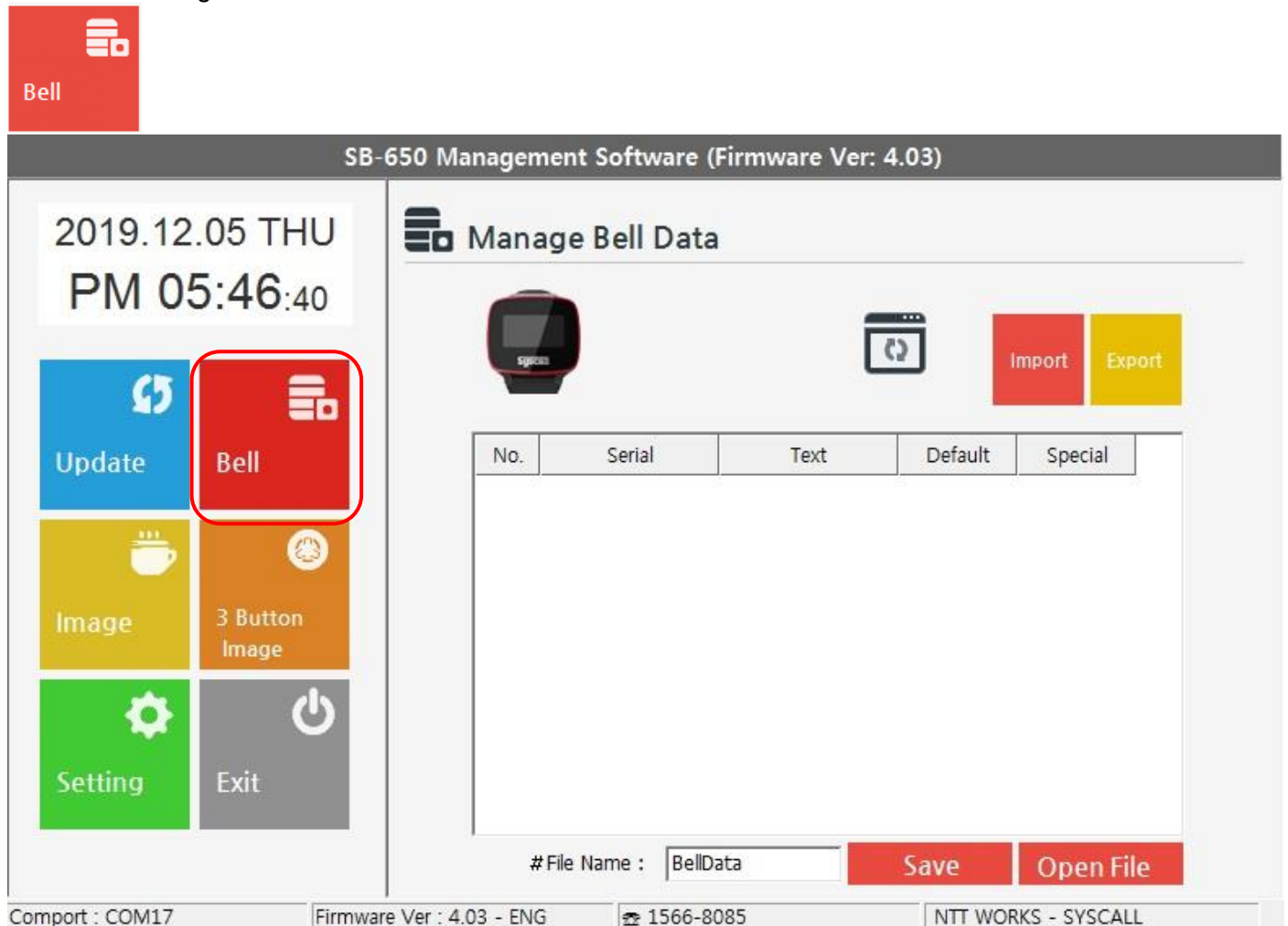
- Update succeed screenshot



- Update failed screenshot

5. Bell Setting

Go to Bell setting



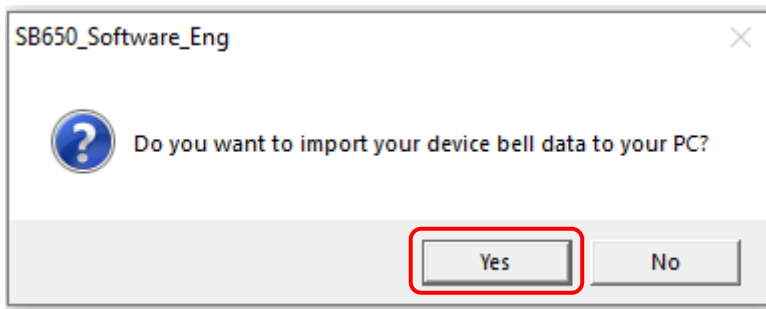
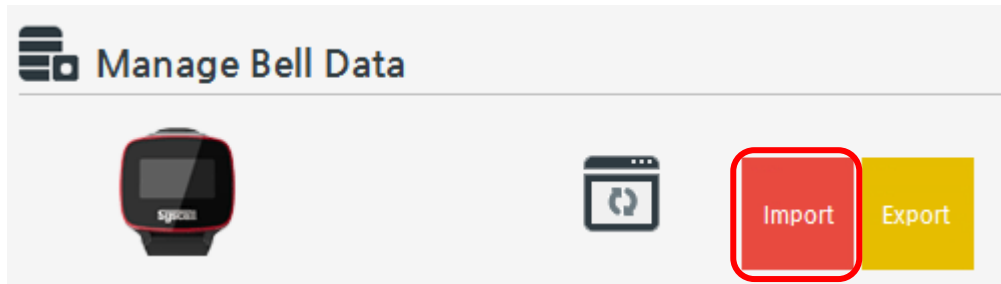
This function enables you to manage your device bell data. You are able to transfer your device bell data to PC and vice-versa. Also, you can edit the caller ID here (Changing text, default and special images).

Import Bell Data: Bring in your device bell data into PC – Number of bells, serial, text, and images. This software can save only one device's bell data. Therefore, it will automatically save the latest updated device's bell data in your PC.

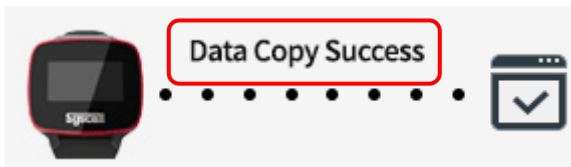
Export Bell Data: Exporting bell data in Software to your device. Your device will only store what's been synced from your PC and remove all the old data.

1) Importing Bell Data

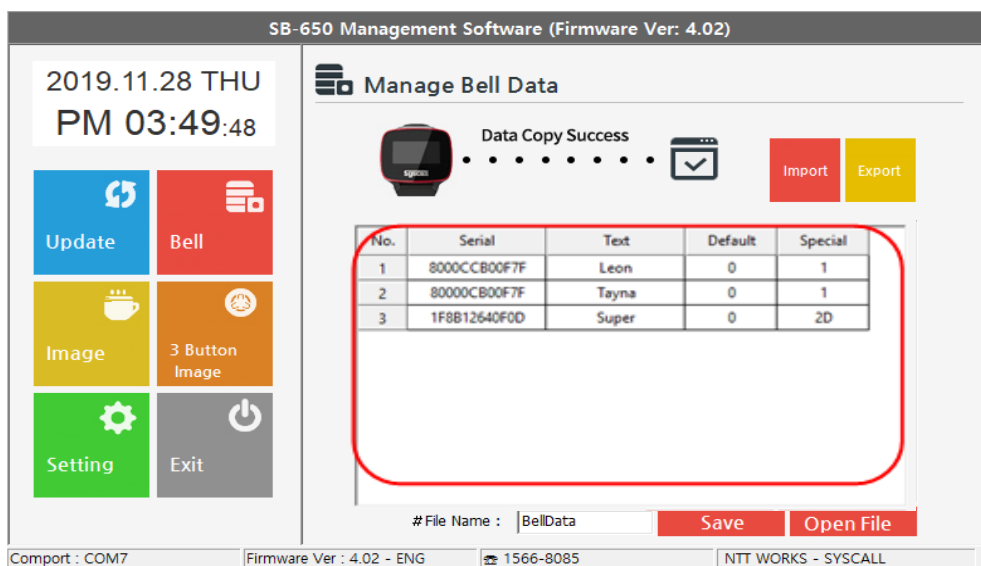
- ①. Go to Bell setting and click Import icon and click 'Yes' to start importing bell data from your device to PC.



- ②. Import complete

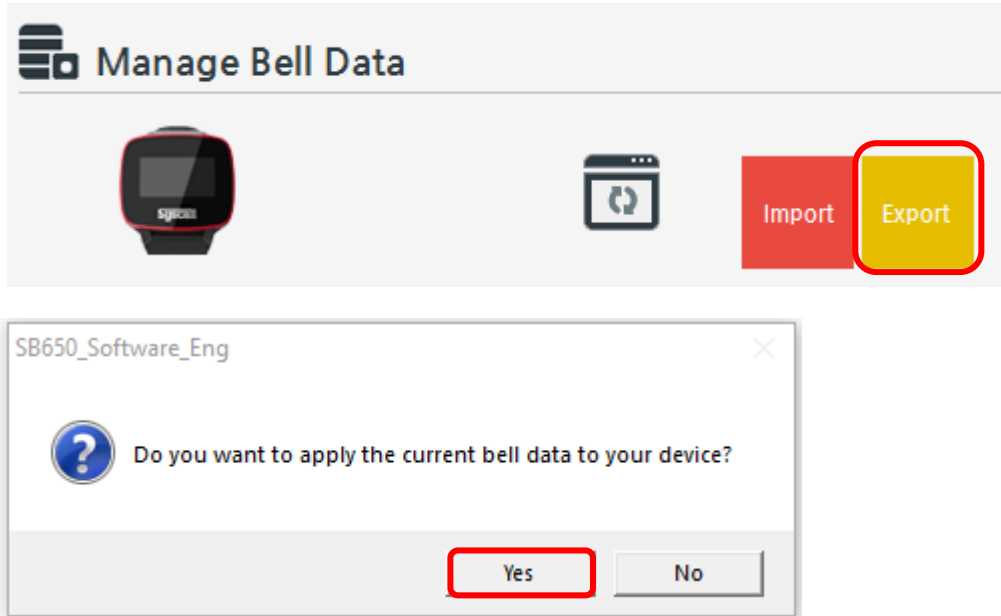


- ③. You now see your device Bell data on your PC

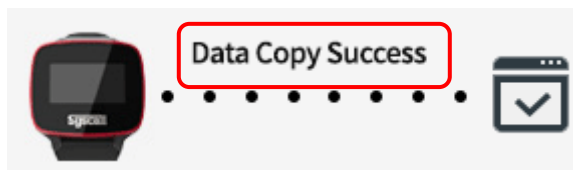


2) Exporting Bell Data

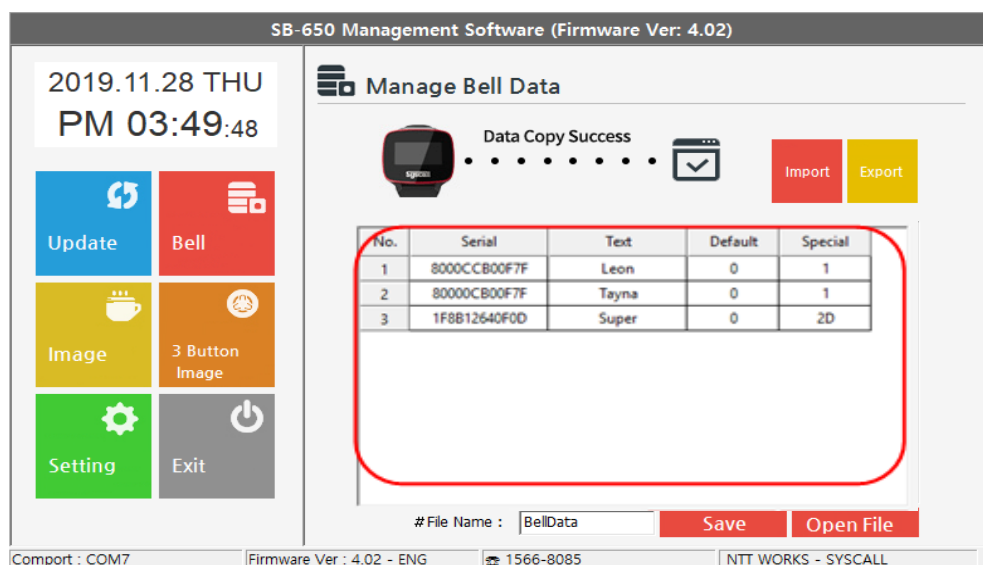
- ①. Go to Bell setting and click Export icon and click 'yes' to start exporting the current bell data on your PC to your device.



- ②. Export complete



- ③. Your device Bell data now synced with your PC.



3) Edit Bell Data

This section explains you how to change your device bell data from the PC. All data imported from your device are editable using this software. [Serial is unable to edit]

No.	Serial	Text	Default	Special
1	8000CCB00F7F	Leon	0	1
2	80000CB00F7F	Tayna	0	1
3	1F8B12640F0D	Super	0	2D

Change Caller ID

① Changing Text:

- i. Double click the text and the caller ID screen pops up. Change the content and press 'Apply'

No.	Serial	Text	Default	Special
1	8000CCB00F7F	Leon	0	1
2	80000CB00F7F	Tayna	0	1
3	1F8B12640F0D	Super	0	2D

Called ID



Called ID

- ii. You see the caller ID has changed on the list when it is successfully completed

Manage Bell Data

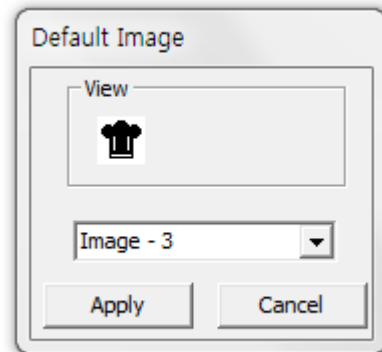
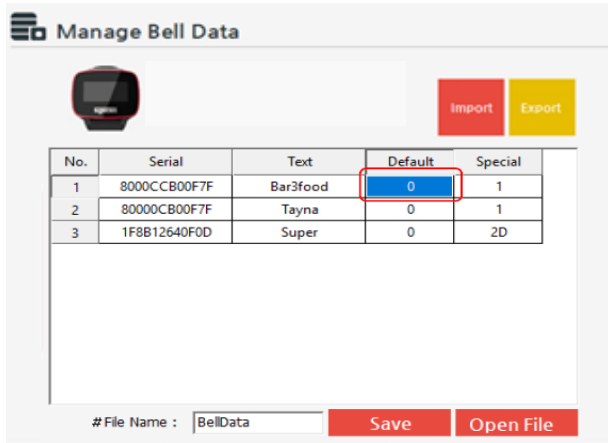
No.	Serial	Text	Default	Special
1	8000CCB00F7F	Bar3food	0	1
2	80000CB00F7F	Tayna	0	1
3	1F8B12640F0D	Super	0	2D

② Change Default and Special Images

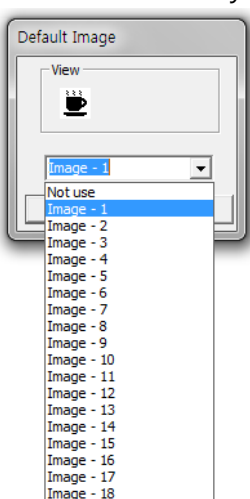
It is simple as changing text.

All images are displayed as numbers. Let's start with changing default images.

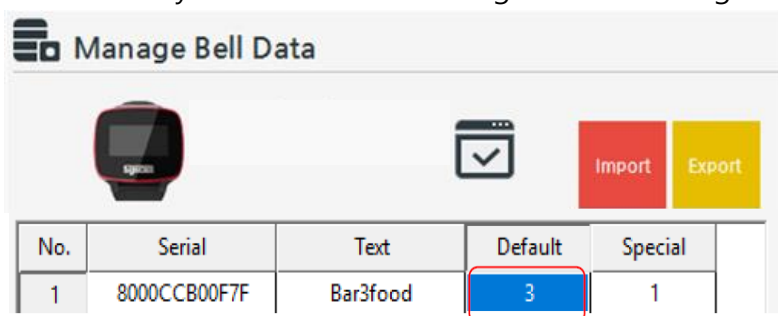
- i. Double click the number that you wish to change and the image change screen pops up.



- ii. Pick what you want and press 'Apply'



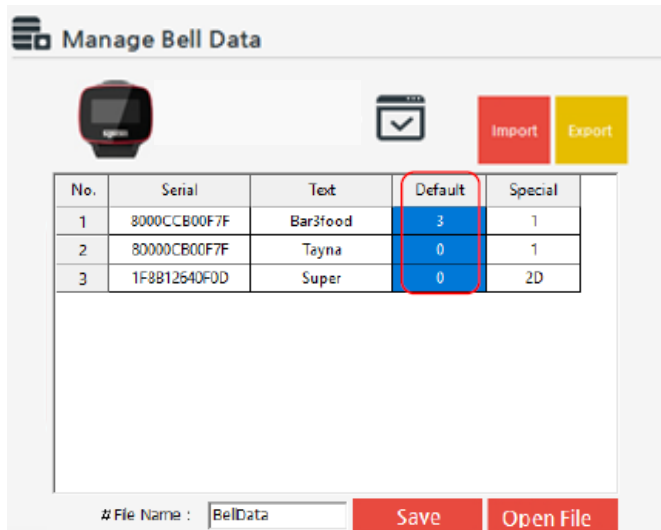
- iii. And you see the default image number changed.



- iv. How to change the special image is the exactly same as changing default image.
The only difference is that you can edit or create your special images using image editor which you cannot do with the default image. This will be explained in section 7, page 18.

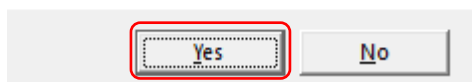
③ Apply the same Image to all bells

- i. If you wish to apply the same default & special images to every registered bell, double click the title and then it captures the entire registered bells. And click 'Yes' to apply to all your registered bell.

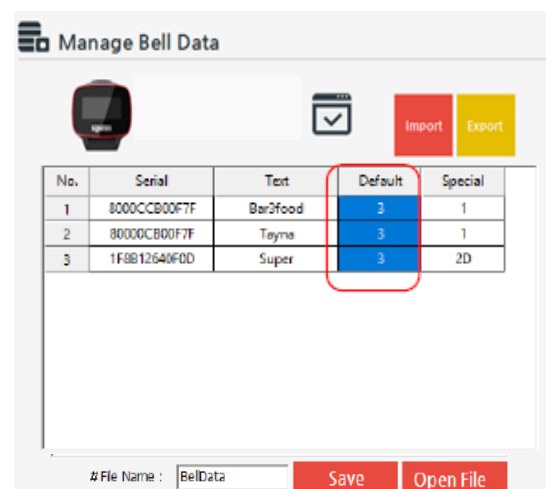
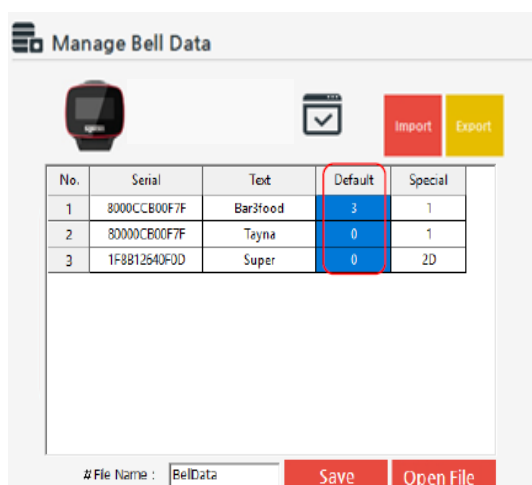


SB650_Software_Eng

Do you want to apply to all?



- ii. And you see the same default image number applied to all other bells



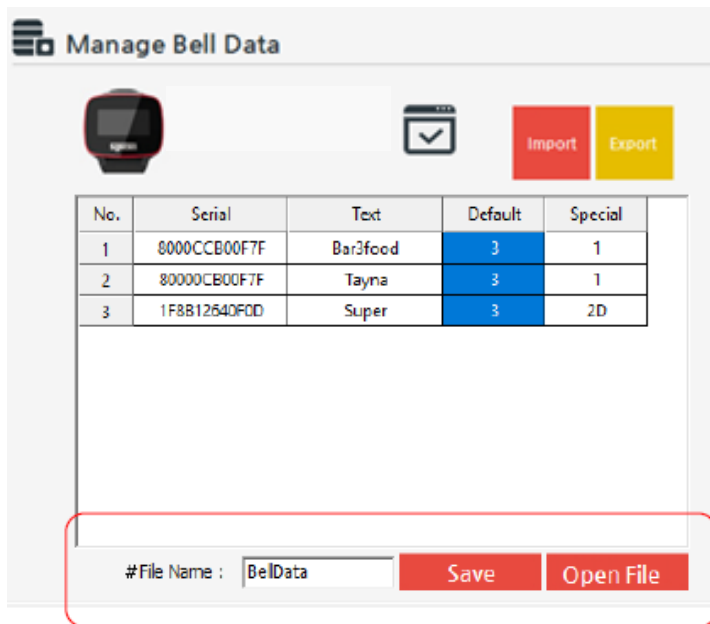
-Screenshot of before applying to all -

-Screenshot of after applying to all

- iii. Remember that this feature is only applicable with the image that sets in NO 1 bell. Thus, you should set your desired image in NO 1 Bell to apply to all.

④ Create/Save/Open Bell data file

- i. You can create/ save changes / open bell data file



Manage Bell Data

Import Export

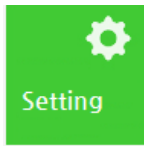
No.	Serial	Text	Default	Special
1	8000CCB00F7F	Bar3food	3	1
2	8000CCB00F7F	Tayna	3	1
3	1F8B12640F0D	Super	3	2D

#File Name : BellData Save Open File

- ii. Create or save as new file name: Create file name and click 'save'
 Save changes: Click 'Save'
 Open: Click 'Open file' to open other files

6. Setting

- ① Go to setting



- ② You can manage your function settings here. Also, you can copy the device settings and apply to PC and vice-versa. All the active cells are editable.
- ③ Import: To import your device settings and apply to PC.
- ④ Export: To apply changes to your device.

SB-650 Management Software (Firmware Ver: 4.02)

2019.11.28 THU
PM 05:00:25

Update


Bell


Image

3 Button Image

Setting

Exit





Import

Export

Setting Initialization

User Name :

PN :

GN :

Range of GN : ~

Delay Time :

Sound Type :

Sound Pattern :

Alert Time (sec) :

Clear-bell Alarm :

3 Button Bell Recognition :

Button 1 :

Button 2 :

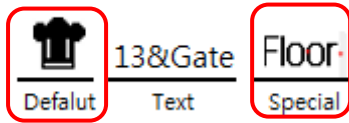
Button 3 :

Monitor Mode :

Standby display :

Comport : COM7
Firmware Ver : 4.02 - ENG
☎ 1566-8085
NTT WORKS - SYSCALL

7. Manage Special image & 3 Button Bell Special Image



① You have two different images to use – optional - while you are creating the caller ID, and we call it as a default and a special image.

- Default image

There are 20 images in SB-650 gallery and you pick the one you like to use.

You cannot edit these images or delete from the gallery.

- Special image

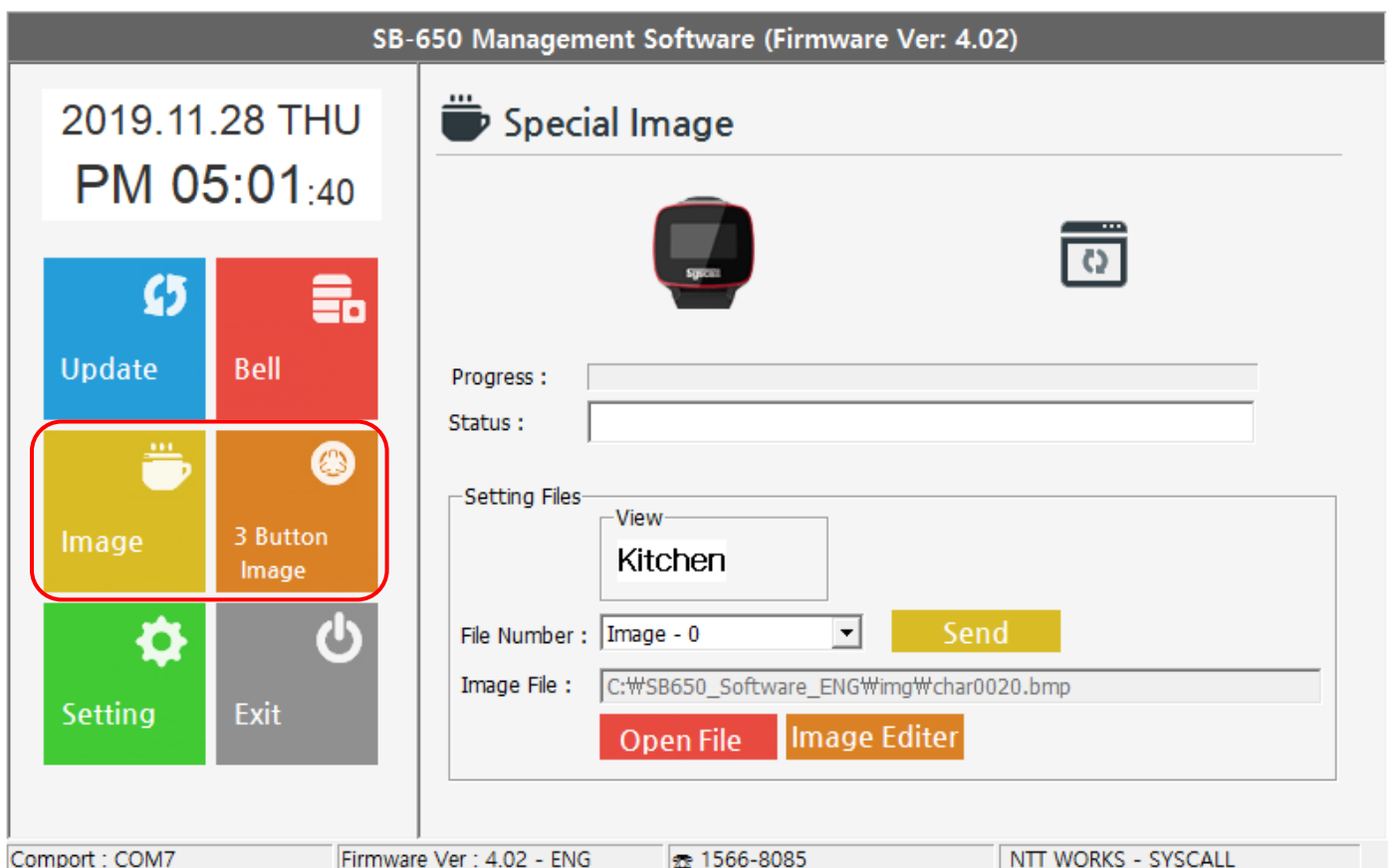
- For one button bell

There are 20 sample images in your device. You can create / edit / delete special images and store up to 20 images.

- For three button bells

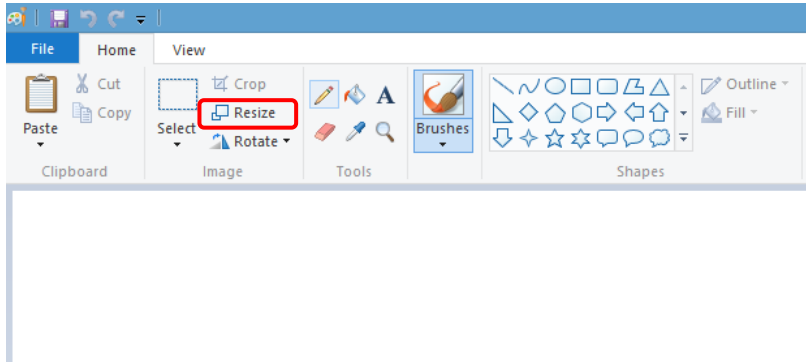
There are 6 sample images in your device. You can create / edit / delete special images and store up to 6 images.

① There are two ways to create special images.

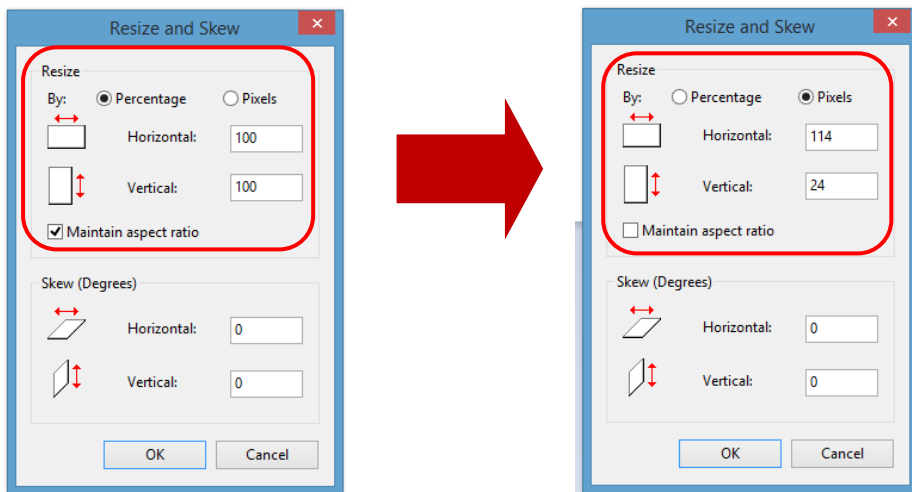


1) Create image using 'Paint'

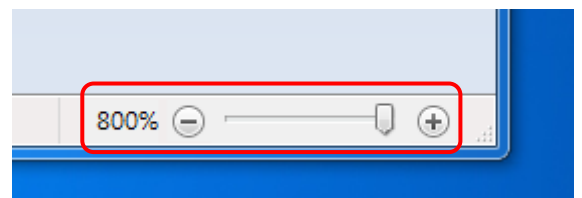
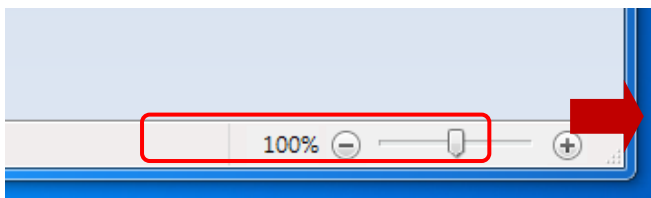
- ① Start -> Search for "Paint"
- ② Click "resize"



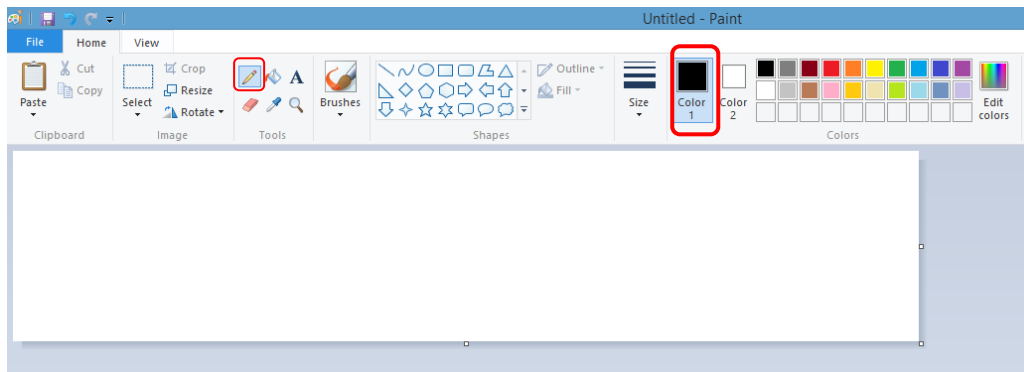
- ③ Change setting as below
 - Standard: Percentage -> Pixel
 - Horizontal: 114
 - Vertical: 24
 - Inactive maintain aspect ratio



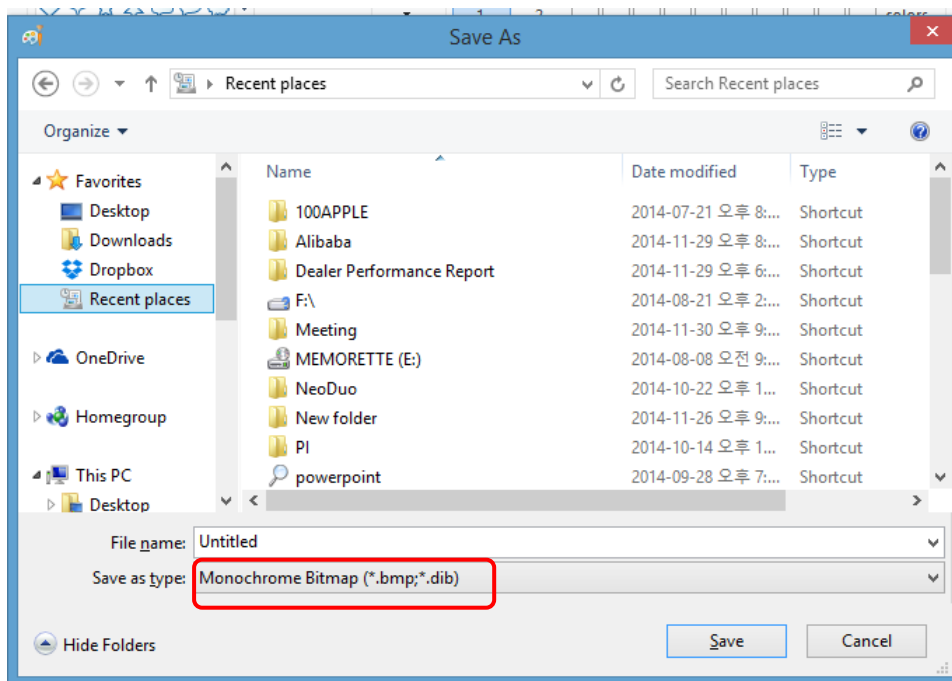
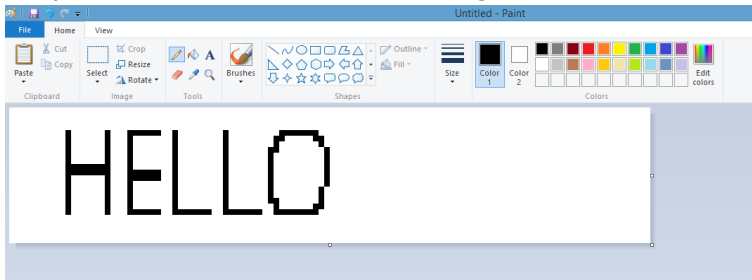
- ④ You can see the zoom in/out at the right bottom of your screen and zoom in your screen to the max.



- ⑤ Click pencil, select black color, and start drawing / writing. Remember to zoom in your screen to the max, otherwise the drawing area looks too small.

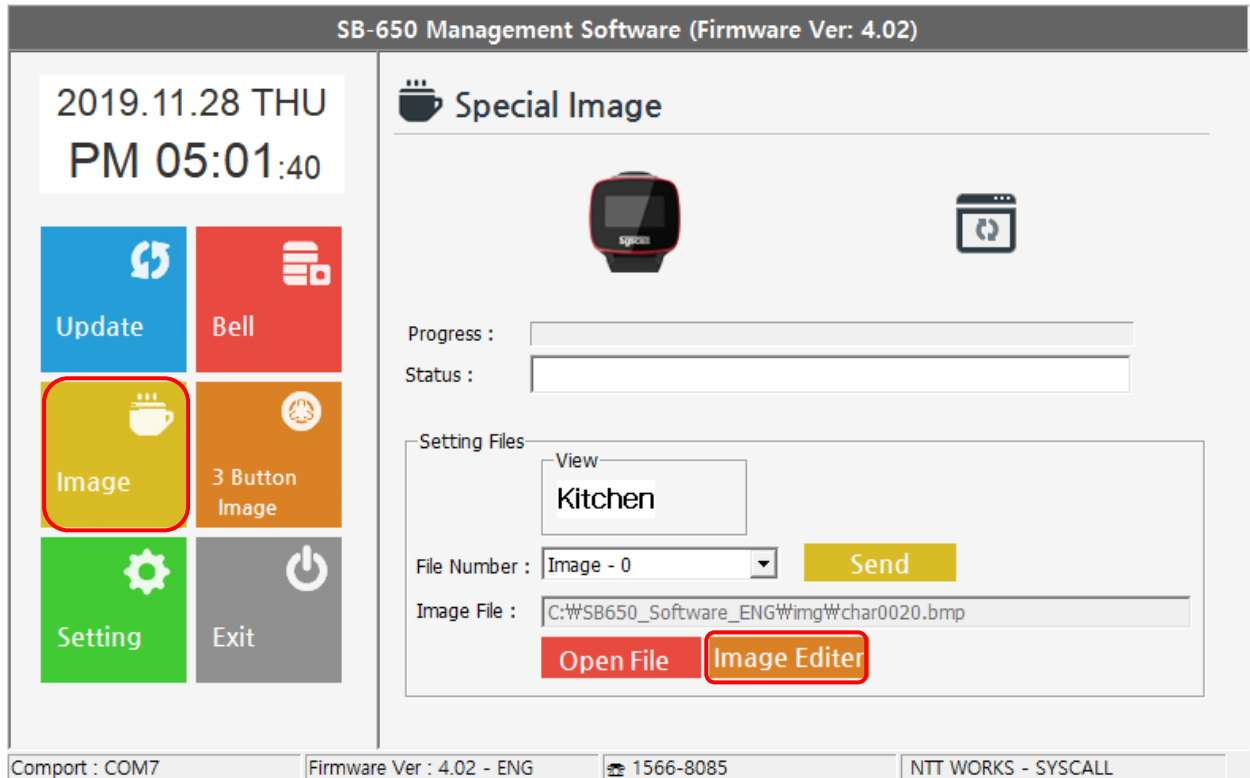


- ⑥ When you finish drawing, press F12 and "Save as" pops up. Create the file name and set the save as type Monochrome Bitmap" and go to Local Drive (C:) -> SB-650 Driver -> Img and save.

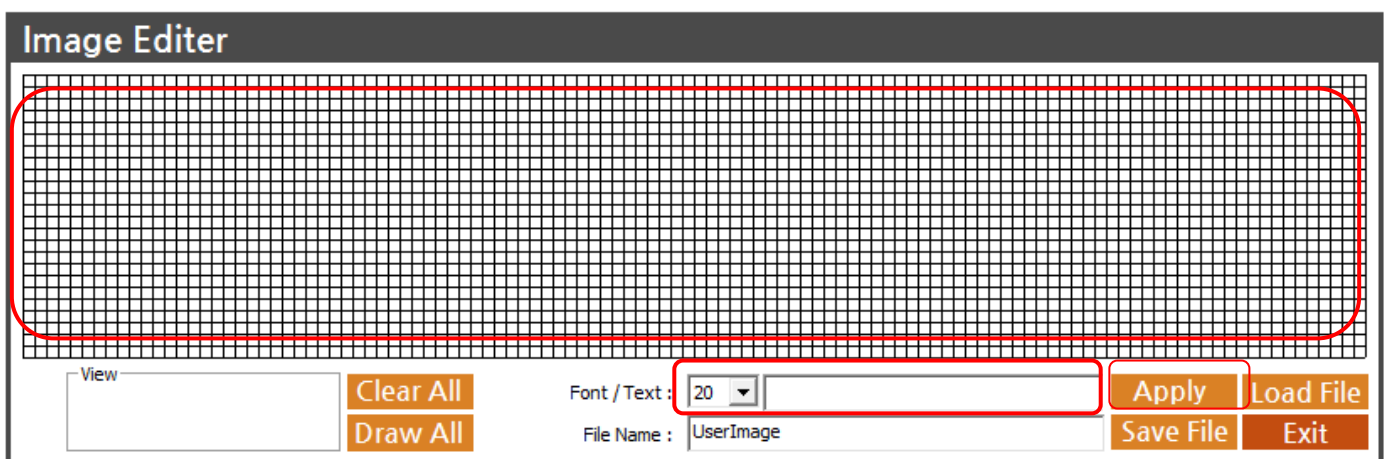


2) Create image using Image editor [Recommended] - Image

- ① Go to "Image" and press "Image editor"

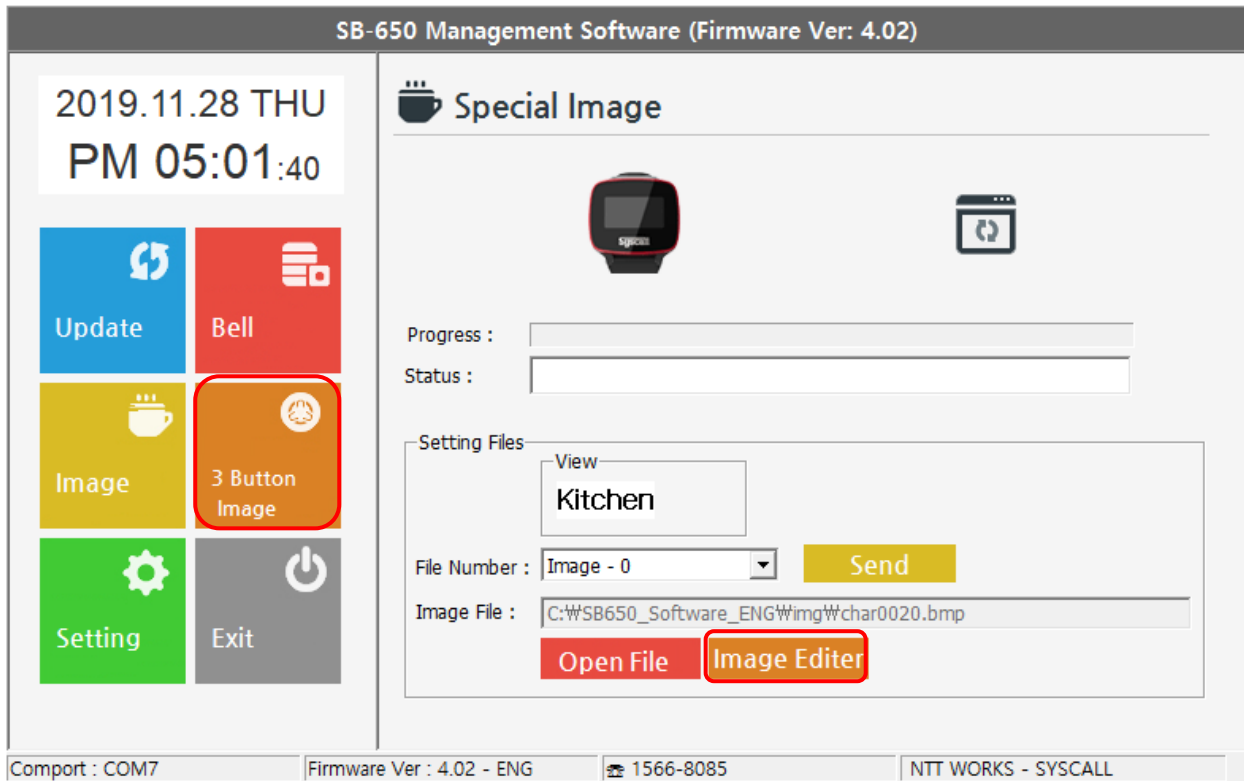


- ② You can create new images or edit existing images. Create new images by drawing directly on drawing area or simply type in the typing area and apply. You can type up to 10 characters with font size 20 and up to 26 characters with font size 11-13. Each space counts as one character.



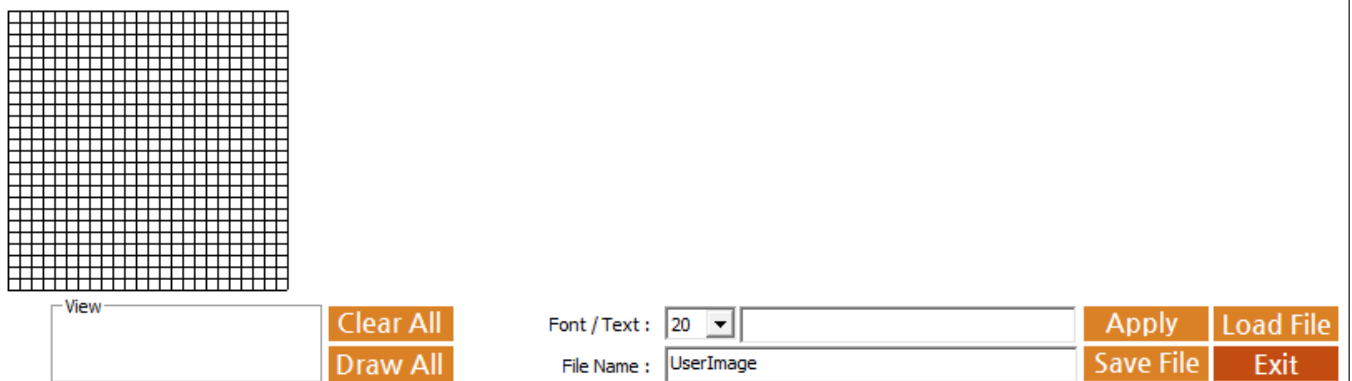
3) Create image using Image editor [Recommended]- 3 Button Image

- ① Go to "3 Button Image" and press "Image editor"



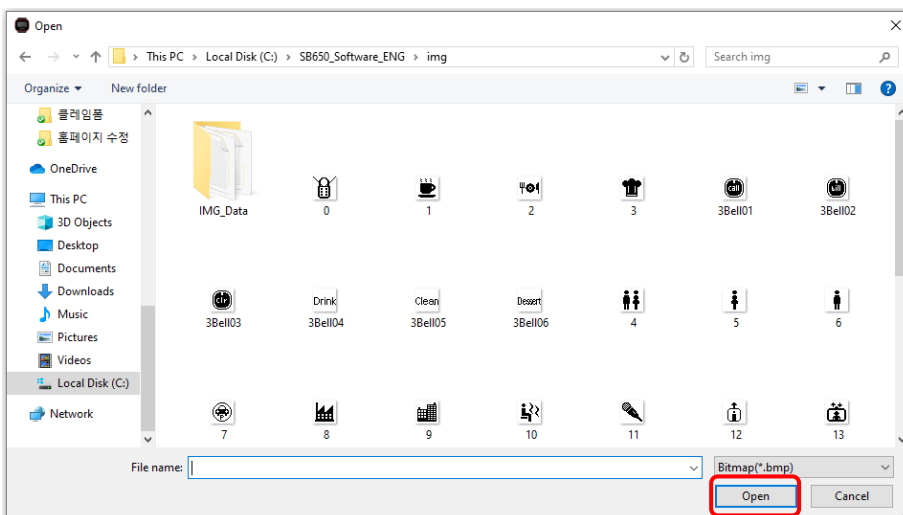
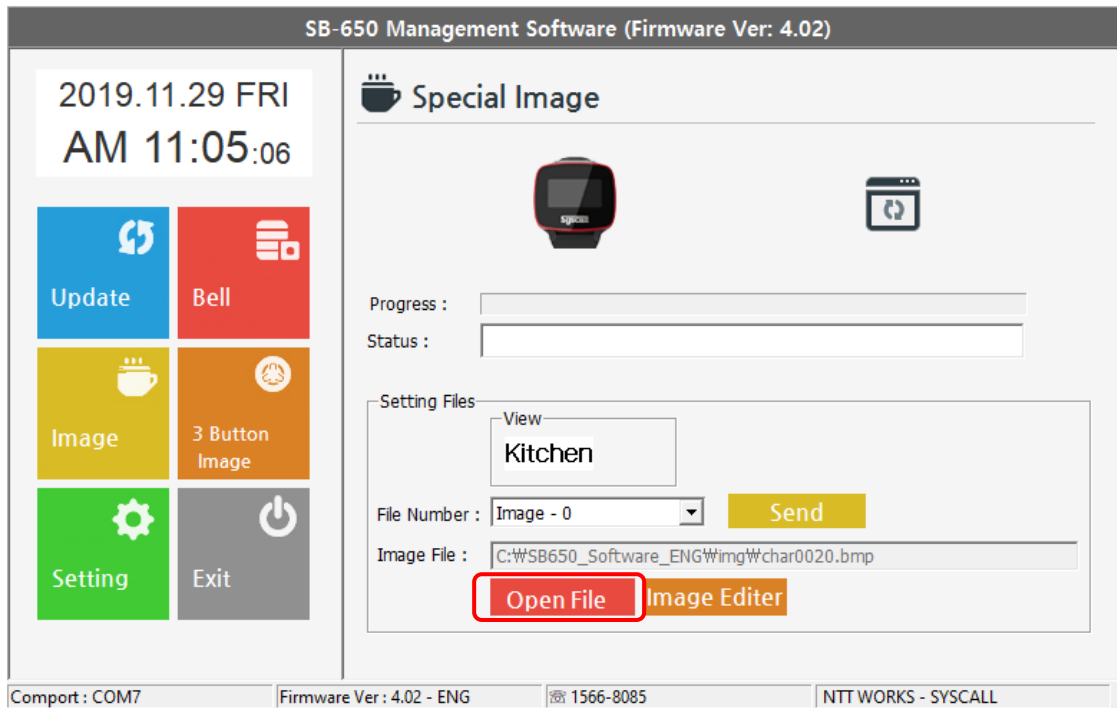
- ② You can create new images or edit existing images. Create new images by drawing directly on drawing area or simply type in the typing area and apply. You can type up to 2 characters with font size 20 and up to 6 characters with font size 11-13. Each space counts as one character.

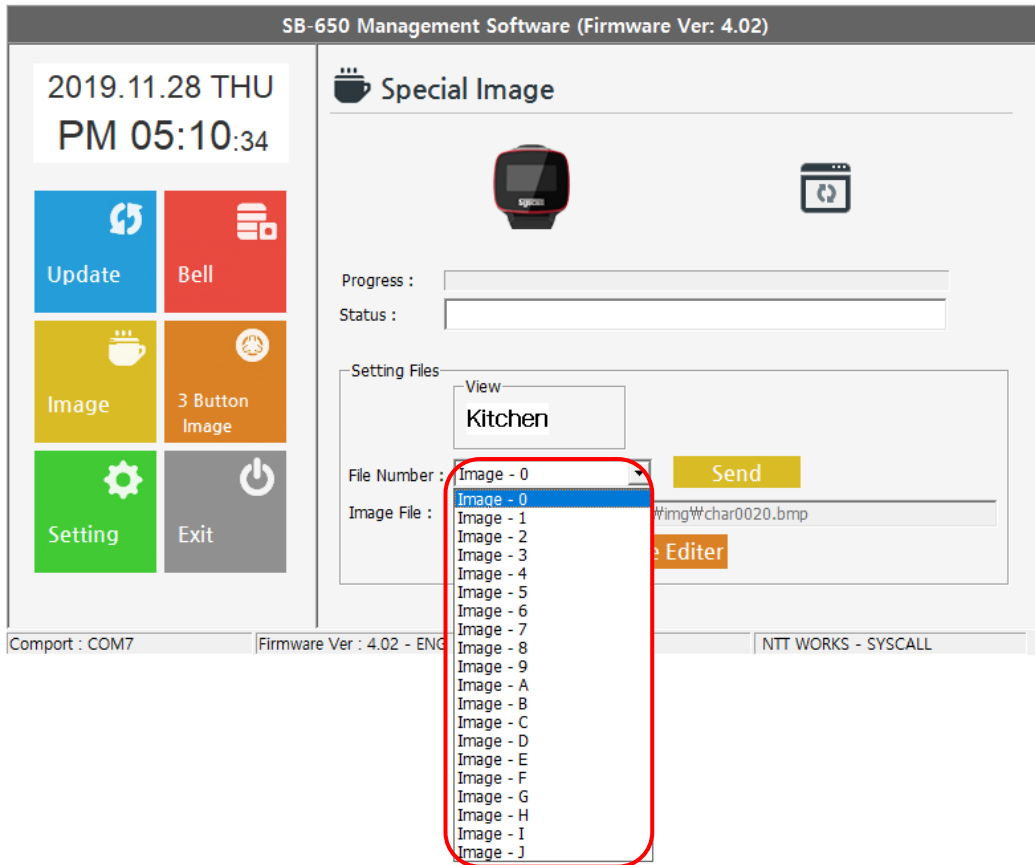
Image Editor



4) Sending special image & 3 button bell image to your device

- ① All images are saved and displayed as number in the program.
- ② Go to 'Open File' and you will go to the special image gallery. If it doesn't go directly to the gallery folder, then go to Local Disk (C:) -> SB650_Software_ENG-> Img.
- ③ Select images from the gallery as you like for each file number and then press 'Send'.
- ④ All selected images are being saved in your device.





8. Exit

Go to Exit and click "YES" to exit, and "No" to continue to run software.

